

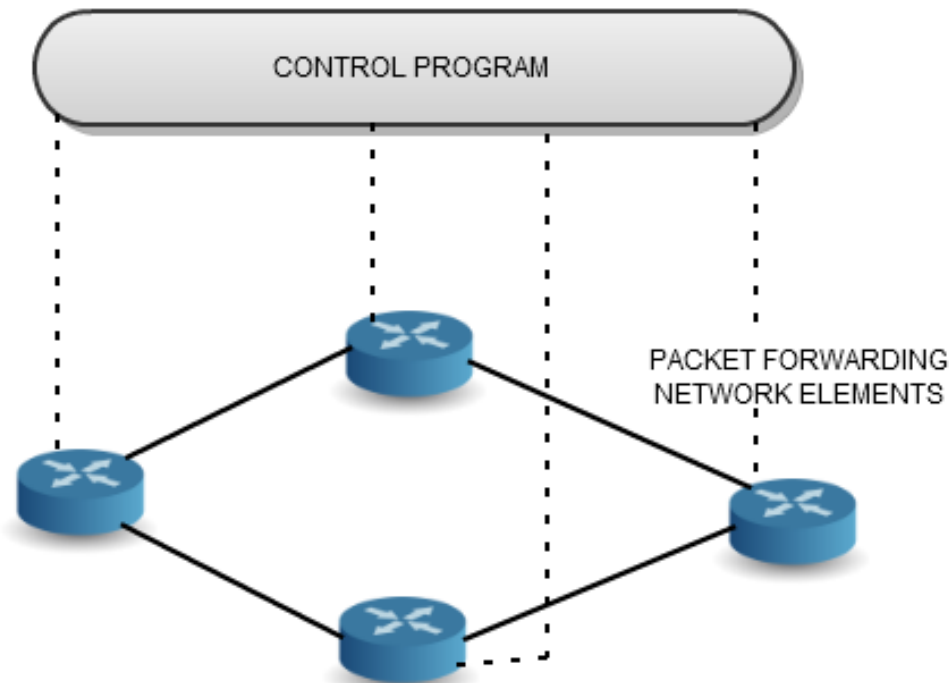
OpenFlow Implementation of Mobility First Protocols

WINLAB Summer Internship

Aravind Krishnamoorthy

OpenFlow Architecture

- Dumb network elements connected to a central controller
- Packet forwarding is based on rules set by the controller



Storage Aware Routing

- Router should store packets instead of forwarding them to end host if link quality is very poor.
- OpenFlow controller should handle the storage of packets in some Network Attached Storage.
- Storage and retrieval while making sure the payload remains intact.

Coming Week

- Running simple experiments using FloodLight controller on ORBIT.
- Start with a topology of 3 nodes.
 - Node 1 sending data to node 2.
 - Directing the data to node 3 and saving the payload in node 3.